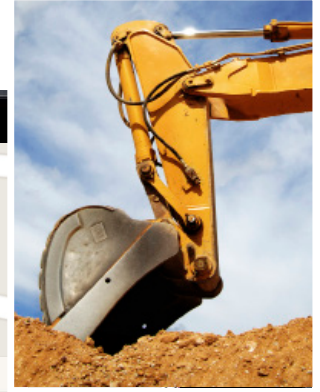


DAMAGE PREVENTION

DIGCHECK: EXCAVATORS



Dashboard

19-Jul (Tue)

1668892C **Log Out**

Due: 8-JUL 11

16693314

Due: 13-JUL 11

A1891594

Reschedule: 1

16189196

Reschedule: 1

16188032

Reschedule: 1

16691269

Reschedule: 1

16693408

Due: 13-JUL 11

Emergency

Excavator
BAYSIDE TECHNOLOGIES INC
Open Date
17 Jun 2016 — 18 Jul 2016

All	42
Normal	0
Emergency	0
Project	42

Tickets | Map | Satellite

Color Codes

- White**
Proposed excavation
- Pink**
Temporary survey markings
- Red**
Electric power lines, cables, conduit and lighting cables
- Yellow**
Gas, oil, steam, petroleum, or gaseous materials
- Orange**
Communication, alarm or signal lines, cables, or conduit
- Blue**
Potable water
- Purple**
Reclaimed water, irrigation, and slurry lines
- Green**
Sewers and drain lines



DigCheck Pro was created to give excavators the ability to access and view all their ticket information, any-time and anywhere.

SAVE TIME & MONEY RIGHT FROM THE FIELD

DigCheck is intended to give excavators the ability to access their One Call ticket information from the field by providing both high-level and detailed information for each ticket. Information includes locator notes, post locate photos/videos, utilities located and completion times. Available for iOS and Android devices.



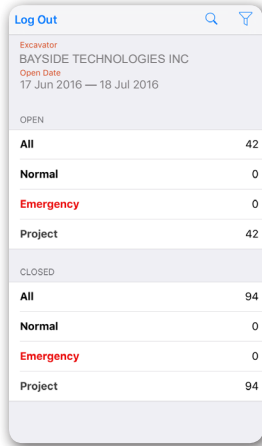
USIC Works for YOU

USIC works for YOU. From local infrastructure to national networks, we protect underground utilities across the country - keeping you connected to your customers and keeping the public safe. Your communities are our communities. Our mission is to deliver quality, efficient, safe, and innovative solutions to protect our partner's infrastructure and critical assets.



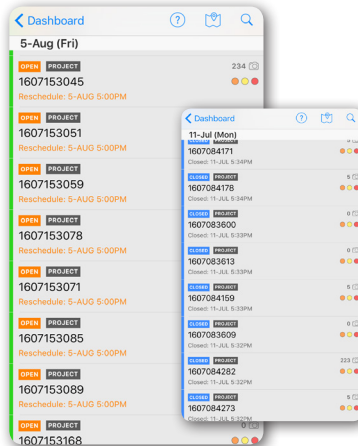
USICLLC.com

DIGCHECK IS DESIGNED AROUND THE ABILITY TO ACCESS AND FIND YOUR MOST CRITICAL INFORMATION WITH EASE: Whether you are on your smart-phone or tablet, the user interface is easy to use, and the search functionality gives you the ability to filter the information so you can view just the date your looking for.



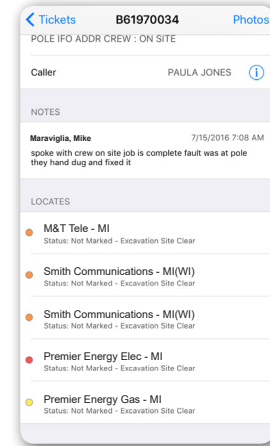
EXCAVATOR SUMMARY:

- Provides high-level information about customers tickets
- Tickets are broadly separated between open/closed and are further subdivided based on their special status (i.e., emergency or project ticket)



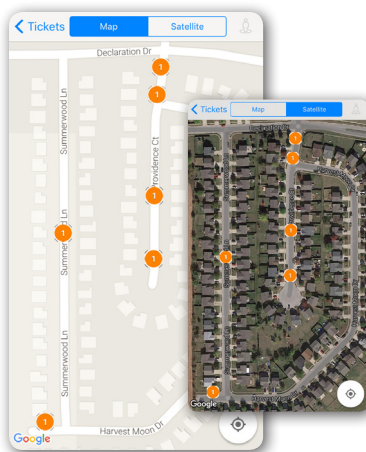
OPEN TICKET LIST:

- You can view your full list of open and closed tickets
- To view detailed information on any ticket, just click on the ticket number
- Universal ticket search functionality: Ability to only view tickets in your area (by city or state)



TICKET DETAIL:

- Click-able map of where the ticket was performed
- Shows status, important dates, ticket length and address
- Locater name and contact information
- Notes section for any special information
- Color coded locates with status for each



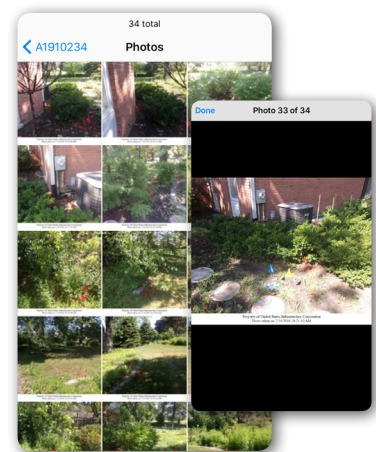
TICKET MAP DETAIL:

- You can view the map in normal or satellite view
- Zoom the screen to view the various ticket locations in more detail
- Helps excavators view where their tickets are in an easy and efficient manner



TICKET MAP DETAIL:

- Street View Integration
- Tap the orange circle to view the ticket location through street view
- Helps your excavation team see the layout of the locations prior to getting on the jobsite



POST LOCATE PHOTOS:

- All post locate photos/videos available
- High resolutions photos allow you to zoom in for additional details

For more information, or to set up a DigCheck account for your company please email: DigCheck@usicllc.com